

NCAA WOMEN'S ROWING CHAMPIONSHIP

May 29-31, 2026 | Lake Lanier Olympic Park | Gainesville GA



DINING

*call for catering info

▲ groups

PIZZA/PASTA

Vendetti's ▲

(678) 929-9539 | 434 High St SW Suite B

Atlas Pizza

(678)971-1200| 125 Washington St NE

Mellow Mushroom ▲

770-531-1500 | 700 Green St

Peyton's Pie Company

678-943-2900 | 118 Main St.

Johnny's NY Style Pizza ▲

678-696-5476 | 114 Jesse Jewell Pkwy.



Vendetti's

HOMESTYLE

Tupelo Honey ▲

(678)207-3300 | 2207 Limestone Ridge NE

Longstreet Cafe

770-287-0820 | 1043 Riverside Terrace

BARBECUE

Johnnys BBQ ▲

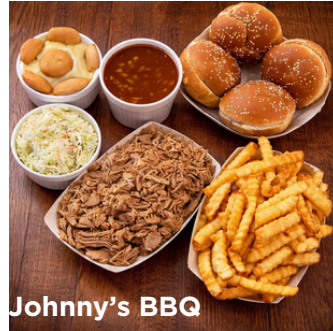
770-536-2100 | 1710 Cleveland Hwy.

Inked Pig ▲

678-696-5611 | 893 Main St.

North GA BBQ

706-744-6358 | 117 Green St.



Johnny's BBQ

MEXICAN

Consuelo ▲

(470)703-0300 | 112 Bradford Street

Senor Fiesta ▲

770-534-1122 | 1943 Jesse Jewell Pkwy.

Surcheros

770-741-1504 | 2187 Limestone Pkwy.



Consuelo

AMERICAN

Craft Burger

(470) 760-9558 | 118 Jesse Jewell Parkway

The Collegiate Grill

678-989-2280 | 220 Main St.

Avocados ▲

770-532-0001 | 109 Bradford St.

Recess Southern Gastro Pub ▲

678-450-0444 | 118 Bradford St.

The Stag-Chophouse & Club ▲

470-252-5016 | 110 Main St.

Sweet Magnolias

678-862-0254 | 118 Main St.

Wild Wing Cafe ▲

770-536-9177 | 311 Jesse Jewell Pkwy.

Standard Service GA ▲

678-971-1025 | 400 Jesse Jewell Pkwy.

Taco Mac ▲

678-971-3627 | 1979 Jesse Jewell Pkwy.

Bourbon Brothers Smokehouse & Tavern

678-434-0366 | 312 Jesse Jewell Pkwy.

Sanctuary on the Square

470-290-5559 | 107 Bradford St. NW

First Watch ▲

470-228-0235 | 2121 Limestone Ridge Bldg. 400

Baddies Burgers

(678)971-1200| 125 Washington St NE

OTHERS

Taqueria Tsunami

(678)310-1149 | 106 Spring Street

Centro GVL Eatery ▲

(470) 290-5142 | 130 Bradford St NE

Decoy ▲

678-943-1371 | 123 Green St.

Alpha Gyro

(678)971-1200| 125 Washington St NE

Greek Tavern

470-208-6116 |337 Jesse Jewell Parkway



Taco Mac



SCAN
HERE FOR
MORE



GROCERIES

Kroger

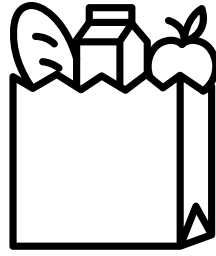
1931 Jesse Jewell Parkway, Gainesville GA 30501

Publix

2155 Limestone Rdg NE, Gainesville, GA 30501

Walmart

400 Shallowford Rd., Gainesville GA 30501



MEDICAL

Northeast Georgia Physicians Group Urgent Care

(770)219-7777

597 S Enota Dr NE, Gainesville, GA 30501

Every day 8:00 am - 7:45 pm

Accepts walk-ins | X-ray | Pediatric care | Online waitlist

Northeast Georgia Physicians Group Orthopedic Walk-In Clinic

(770)219-9004

1315 Jesse Jewell Pkwy SE #300, Gainesville, GA 30501

Monday through Friday 8:00 am - 4:30 pm

Accepts walk-ins | X-ray | Online waitlist

Emergency Room - Northeast Georgia Medical Center Gainesville

(770)219-1200

743 Spring St NE, Gainesville, GA 30501

24 hours



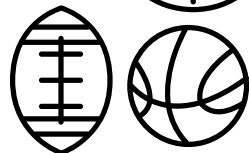
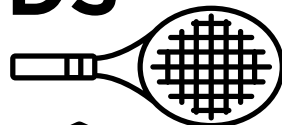
SPORTING GOODS

Dick's Sporting Goods

150 Pearl Nix Pkwy Ste G, Gainesville, GA 30501

Academy Sports + Outdoors

1140 Dawsonville Hwy, Gainesville, GA 30501



FREQUENTLY ASKED QUESTIONS

Gates & Arrival

When do gates open?

6:30 am *daily*.

When do shuttles start?

6:30 am *daily*.

When can spectators enter?

6:30 am *beginning Friday, May 29*

Can tickets be bought at the gate?

Yes, via on-site QR code.

Maps & Local Info

Where is the venue map?

On the NCAA page of the Explore Gainesville website.

- <https://www.explore Gainesville.org/ncaa-rowing-championships/>

What is there to do in town?

Enjoy Rhythm & Row concerts, local dining, and activities around Gainesville.

- Rhythm & Row location 112 Bradford St NE, Gainesville, GA 30501

- <https://www.explore Gainesville.org/>

Hotels

Where can we stay?

Visit the lodging section on the Explore Gainesville website for hotels

- <https://www.explore Gainesville.org/lodging/>



Dining

What places accommodate groups?

- *The Stag- 470-252-5016*
- *Sweet Magnolias (smaller space in Main Street Market) 678-862-0254*
- *Bourbon Brothers- 678-434-0366*
- *Standard Service- 678-971-1025*
- *Chattahoochee Grill 770-532-1173*
- *Mellow Mushroom- 770-531-1500*
- *Johnny's Pizza (book ahead porch section) 678-696-5476*
- *Decoy 678-943-1371*
- *Greek Tavern- 470-208-6116*
- *Luna's 770-531-0848*

Many more also do groups just call ahead and ask to be sure!

What places offer catering?

- *Easy B's 770-589-1070*
- *Pops Catering- 678-538-6394*
- *Centro- 470-290-5142*
- *Alpha Gyro 678-971-1200*

Many more also do groups just call ahead and ask to be sure!

Where can we eat?

There are many places to eat just go to the explore website and look under dining

- <https://www.explore Gainesville.org/dining/>

Seating & Tailgating

Where is the seating?

Open grandstand seating. Foldable chairs allowed.

Are grills allowed?

Yes, propane only. Must stay 5 feet from tents.

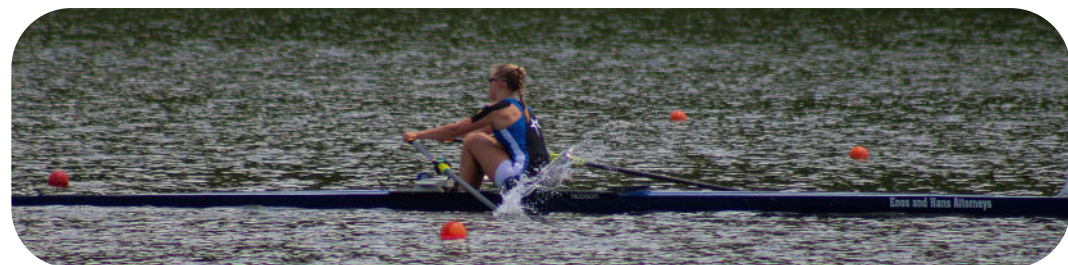
Are tents allowed?

Yes, in designated purchased tent spaces.

Tent Space Options

Front Row 10x20: \$500 (tent included)

Open Tailgating Space: \$100 (bring your own setup)



Food & Merchandise at the Venue

Will concessions be available?

Yes, breakfast and lunch daily. Hours are different every day; they are as follows:

- Friday- 6:30 am-5 pm
- Saturday- 6:30 am-1 pm
- Sunday- 6:30 am-12 pm

Will merchandise be available?

Yes, NCAA and Gainesville merchandise. GVL merch will be at the Rhythm & Row event. NCAA merch will be at the venue!

When will NCAA merch be sold?

The official NCAA merch will be sold on the following days or until we run out...

- Thursday (athletes/officials ONLY) 8 am-5 pm
- Friday- 6:30 am-4:30 pm
- Saturday- 6:30 am-2 pm
- Sunday 6:30 am- 11:30 am



When will Gainesville Merch be sold?

6 pm - 8 pm at the Rhythm & Row event held in Downtown Gainesville

Venue Policies

- Allowed Items -Food, Water & Soft Drinks, Comfort items for Seating/Tent Spaces
- Prohibited Items - Alcohol, Pets, Weapons, Smoke-free facility. Service animals are permitted.

Parking

ADA parking available?

Yes. Limited ADA parking is in Lot A. ADA Trolleys will assist from off-site parking.

Is parking prepaid?

Yes, on-site parking is prepaid only. Free off-site parking is available.



Volunteers

Is it too late to volunteer?

No — apply on the NCAA page on the Explore Gainesville website. Contact Ericka Wilson for details.

NCAA MERCHANDISE AND CONCESSION INFO

NCAA Merchandise will be located in the plaza area

Hours

Thursday (athletes/officials ONLY) 8 am-5 pm

Friday- 6:30 am-4:30 pm

Saturday- 6:30 am-2 pm

Sunday 6:30 am-11:30 am

**Concessions are available in the service building located
at the entrance into the plaza/ *Menu changes daily***

Hours

Friday- 6:30 am-5 pm

Saturday- 6:30 am-1 pm

Sunday- 6:30 am-12 pm

LOCAL ORGANIZING COMMITTEE

Robyn (Chairman, Local Organizing Committee) 770-530-7152

James Watson (Venue management) 470-682-2176

David Wright (Regatta Inquiries) 706-202-4400

Ericka Wilson (Volunteer Coordinator) 943-473-9153

Deb Gravitt (Team Host Coordinator) 770-533-1311

Nightly Activities on the Downtown Square!

Join us for live music, dining, shopping and
experience the charm of Downtown Gainesville
each night 6pm to 8pm



Band line-up:

May 27 All Talk Band (90's-2000's)

May 28 Jason Gardner (country/soul)

May 29 Craver the Band (Classic Covers)

May 30 Eric & Friends (you name it!)

GET YOUR GVL MERCH!

Remember your time in Gainesville with some GVL swag.
Shirts, tumblers, stickers and more will be available at the
Explore Gainesville tent located on the Downtown Square during
the Rhythm and Row nightly concerts.

